

# Acciones para acelerar el aprendizaje en Expresión Gráfica Arquitectónica

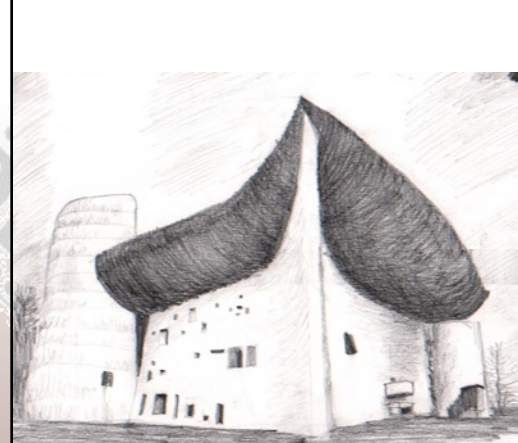
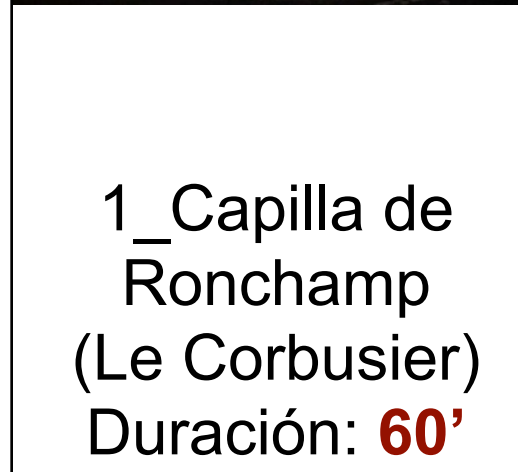
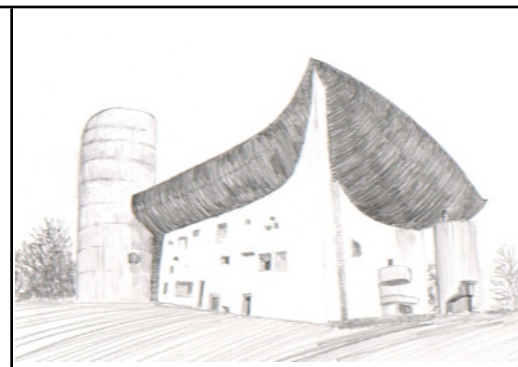
Luis Agustín, Angélica Fernández

Expresión Gráfica Arquitectónica / lagustin@unizar.es

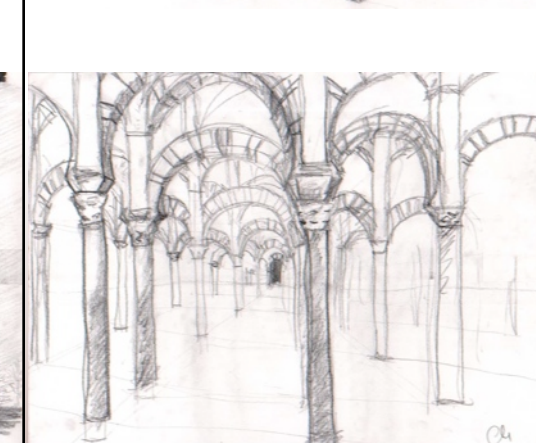
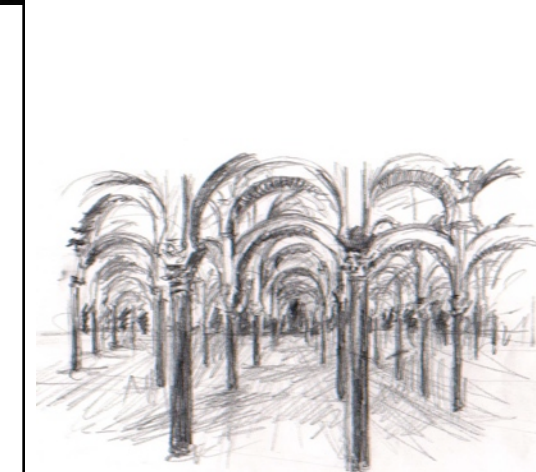
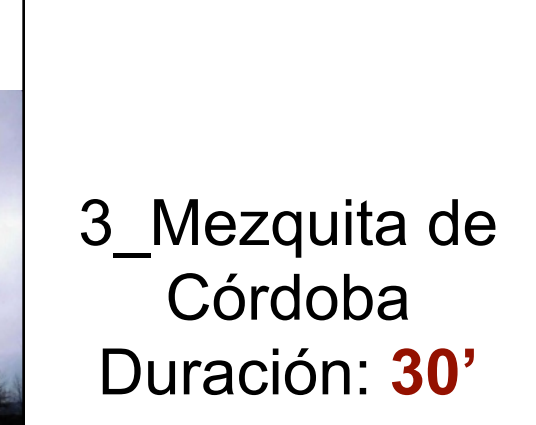
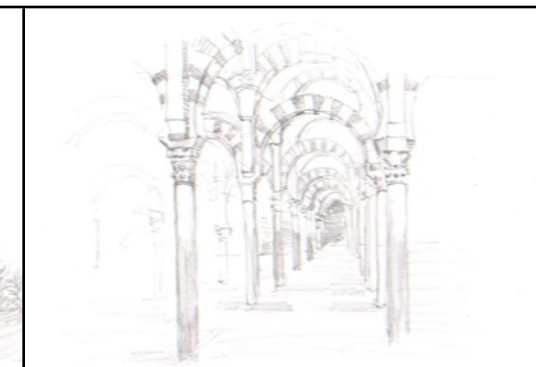
Las imágenes muestran el resultado de un ejercicio realizado en **Expresión gráfica Arquitectónica I**.

Se proyectó una serie de **diapositivas** que los alumnos debían reproducir. El **tiempo de exposición** se fue reduciendo progresivamente: desde 60 minutos la primera imagen hasta 20 segundos la última.

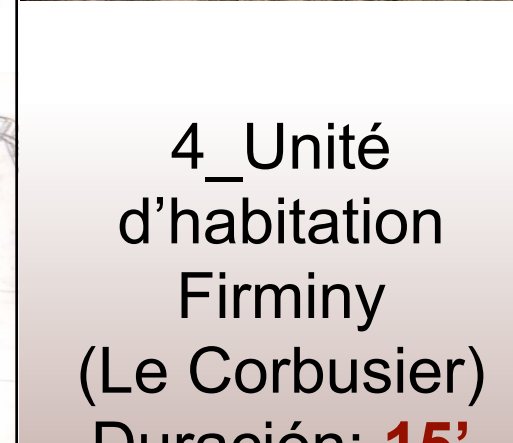
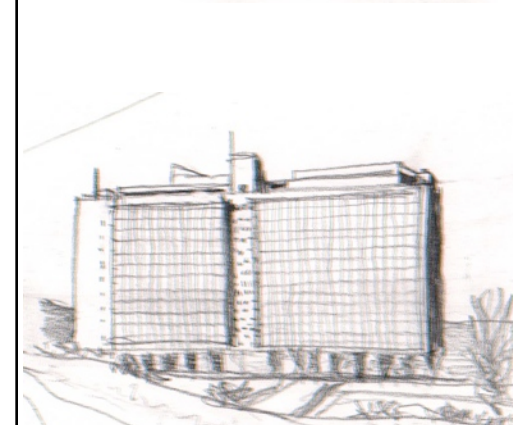
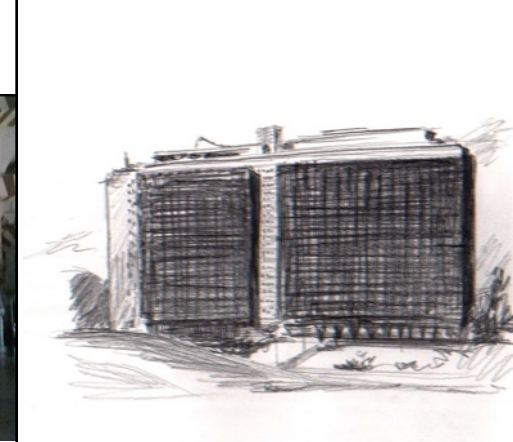
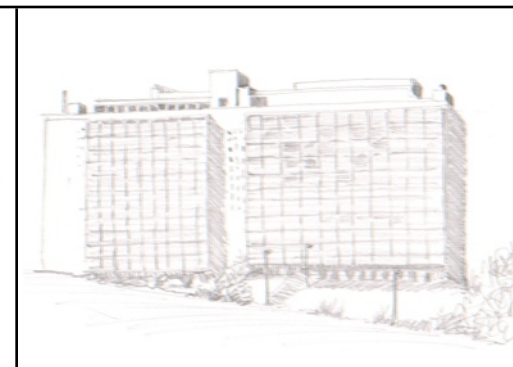
Mediante esta actividad el alumno se ejercita y toma conciencia inmediata de su **capacidad de observación** y de **abstracción**, aspectos clave de la expresión gráfica arquitectónica.



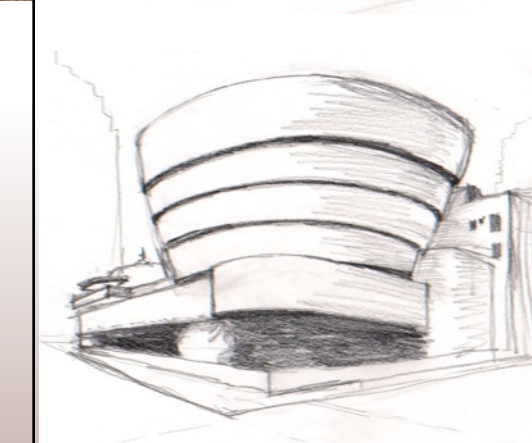
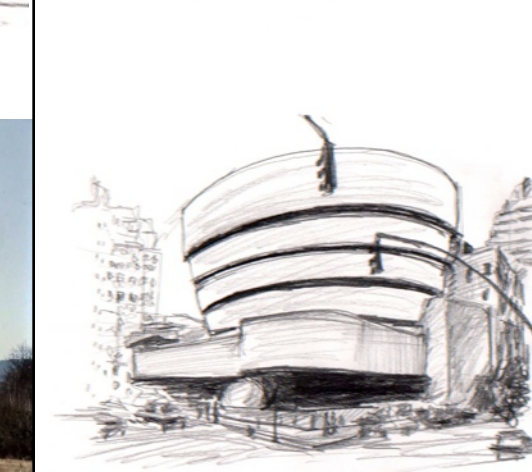
1\_Capilla de Ronchamp (Le Corbusier)  
Duración: **60'**



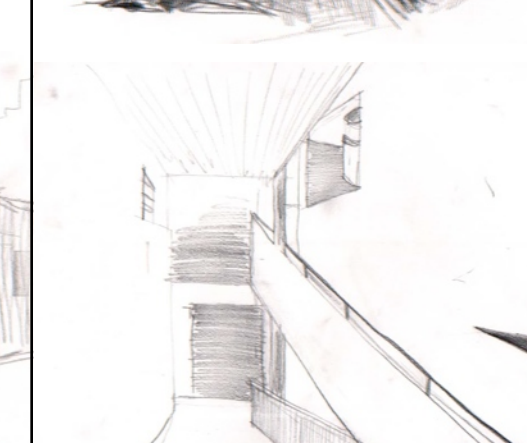
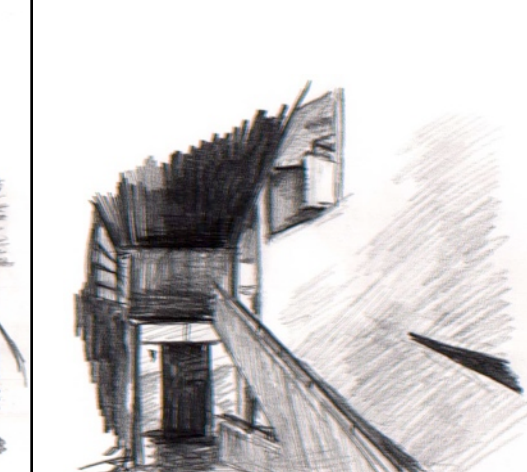
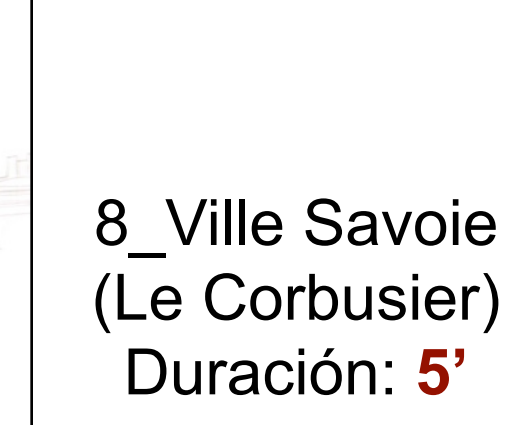
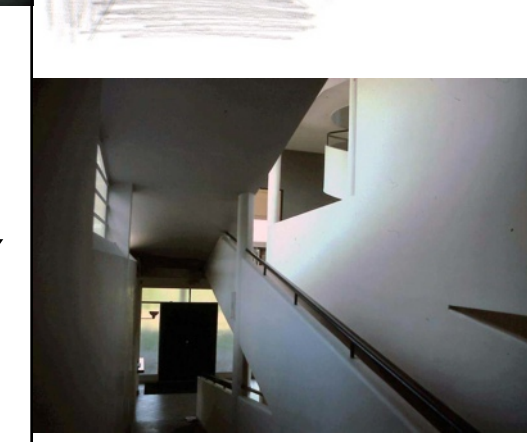
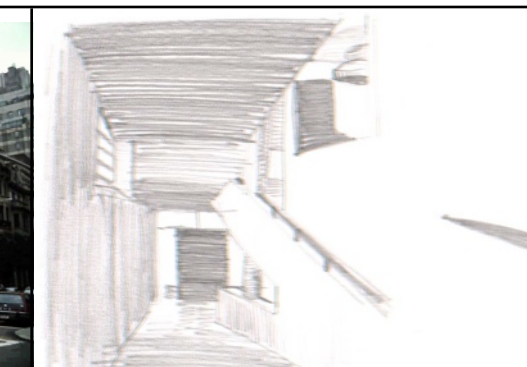
3\_Mezquita de Córdoba  
Duración: **30'**



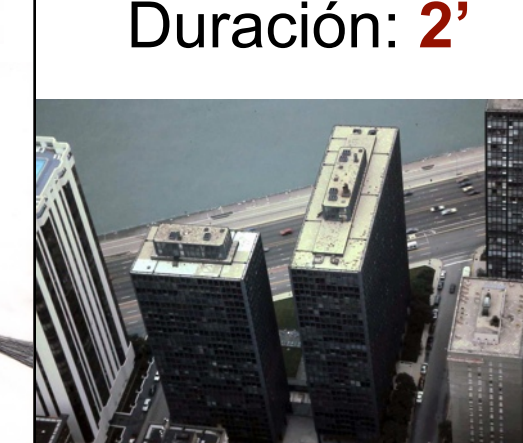
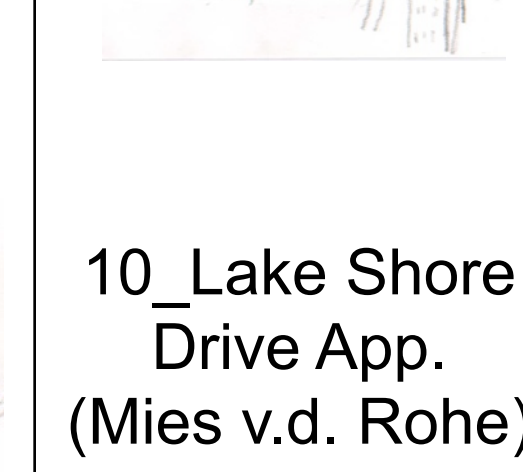
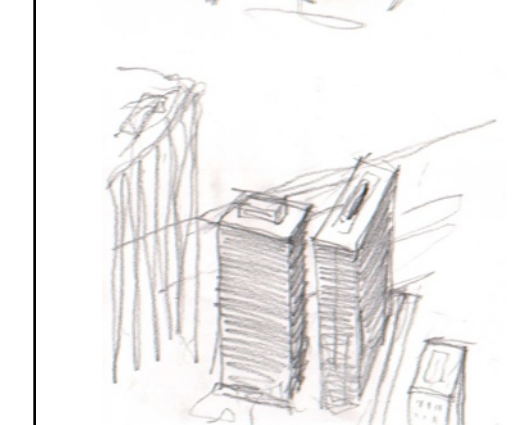
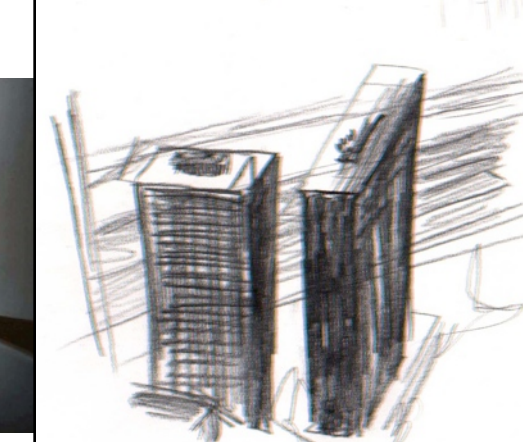
4\_Unité d'habitation Firminy (Le Corbusier)  
Duración: **15'**



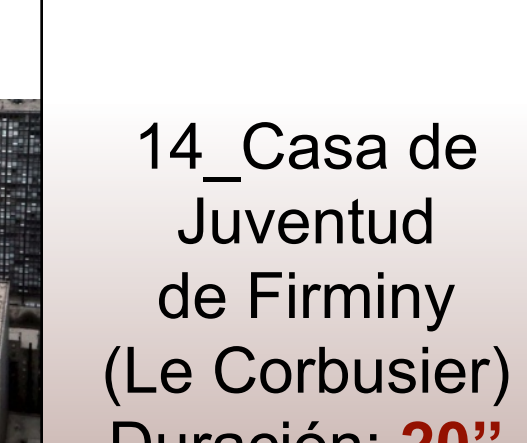
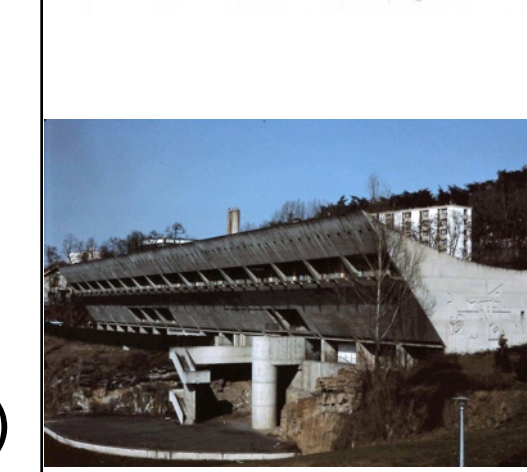
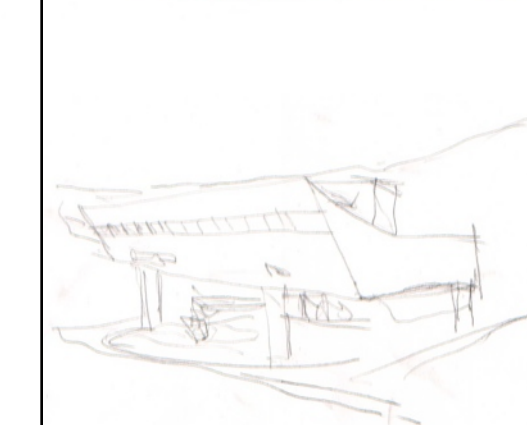
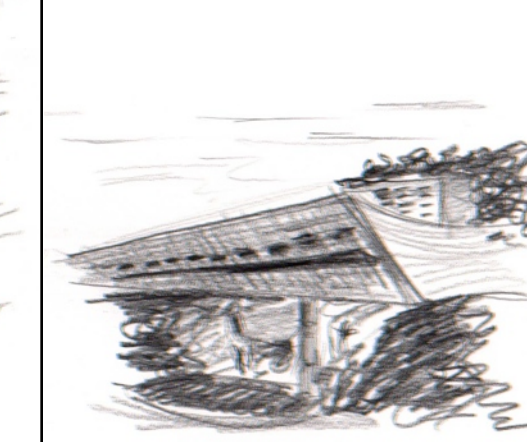
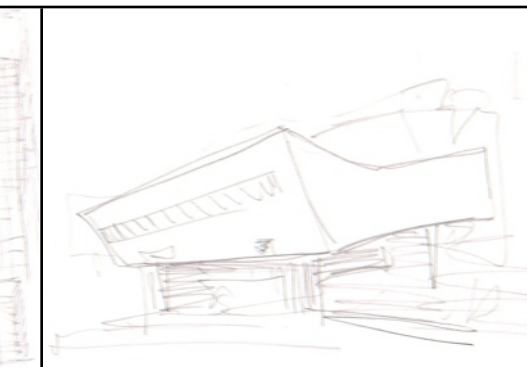
6\_Museo Guggenheim NY (F.L.I. Wright)  
Duración: **10'**



8\_Ville Savoie (Le Corbusier)  
Duración: **5'**



10\_Lake Shore Drive App. (Mies v.d. Rohe)  
Duración: **2'**



14\_Casa de Juventud de Firminy (Le Corbusier)  
Duración: **20''**